

CARDONE ProTech

Supporting Today's Professional Technician



Chrysler VIN Programming - Case Matters

Application:

All Chrysler Flash ECM's requiring VIN programming.

Problem:

After replacing the ECM, the ABS light stays on, or codes for ABS, Air Bag, or bad VIN (84) get set.

Cause:

Incorrect VIN is stored in ECM memory. The correct vehicle VIN must be programmed into the replacement ECM. Additionally, the VIN must be entered in with UPPER CASE letters, see the following example.

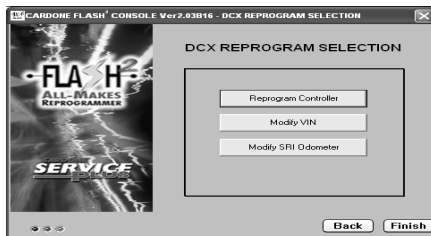
Incorrect: 1b7kf23z0wj243517

Correct: 1B7KF23Z0WJ243517

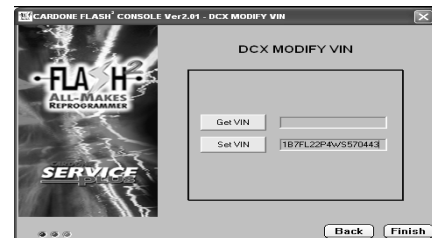
Solution:

Use the Flash2 All-Makes Reprogrammer to set and verify the programmed VIN as follows:

1. Start Flash2 All-Makes Reprogrammer, select Chrysler, select Reprogram ECM, and then select Modify VIN.



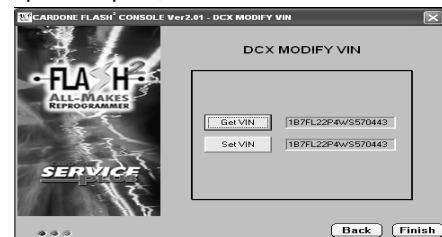
2. Type VIN in SET field. BE SURE TO TYPE IN UPPER CASE. Select SET VIN.



3. The message "Set VIN Successful" should be received. Select OK.



4. Select GET VIN. The VIN number returned must match number entered. If unreadable characters are returned, check for correct number of digits and correct VIN. If necessary correct VIN and repeat steps 2,3 and 4.



For other ProTech publications, visit www.cardone.com
CARDONE Industries, Inc. • 5501 Whitaker Ave. • Philadelphia, PA 19124-1799