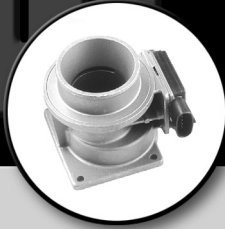


CARDONE ProTech

Supporting Today's Professional Technician



Every MAF Sensor Needs a Breath of Fresh Air

Application:

All vehicles equipped with a mass air flow sensor (MAF).

Problem:

Rough running, engine surge, reduced engine power.

Cause:

The cause of these engine performance problems could be a dirty MAF sensor.

Solution:

The MAF sensor must be clean of dust, dirt and debris. A dirty MAF sensor will not respond as fast to air flow changes as a clean sensor. When replacing the sensor, it is recommended to replace the air filter to help prevent future dust contamination. Remove any dust, dirt and debris from the inside of the air cleaner assembly to ensure trouble-free operation.

Refer to the vehicle service manual for the recommended service intervals for air filter replacement and for the correct type of element. Following the service recommendations will ensure reliable engine performance while protecting the sensor.

Note:

Please refer to your vehicle's service manual for specific diagnostic instructions. This ProTech bulletin is supplied as technical information only and is not an authorization for repair.

For other ProTech publications, visit www.cardone.com
CARDONE Industries, Inc. • 5501 Whitaker Ave. • Philadelphia, PA 19124-1799