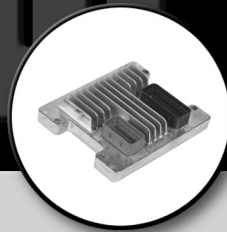


# CARDONE ProTech

Supporting Today's Professional Technician



## ProTech Bulletin Summary: GM ECM/PCM

Before replacing any engine control module, the cause of original unit failure must be determined and corrected. Installing a replacement unit without correcting the problem will lead to early failure. Always refer to the vehicle service manual for specific installation procedures and specifications. The ProTech bulletins listed below cover topics that will assist with part selection, describe typical installation problems, and provide diagnostic solutions or suggestions and service advice.

### Before Installation:

- |            |   |
|------------|---|
| PT 71-0001 | PROM identification guide, GM vehicles 1982-1994                    |
| PT 77-0002 | Diagnostic basics   |
| PT 77-0003 | GM component locator 1981-85 vehicles                               |
| PT 77-0004 | GM component locator 1980-83 vehicles                               |
| PT 77-0005 | Common failures destroy ECM – correct before installing replacement |
| PT 77-0008 | Voltage drop test – very helpful diagnostic test procedure          |
| PT 77-0009 | 10 Step Drivability Test  |
| PT 77-0010 | 1980's OE surface mount problem solution (typical part 77-7730)     |

### During Installation:

- |            |                                   |
|------------|-----------------------------------|
| PT 77-0006 | Use a PROM tool to protect device |
|------------|-----------------------------------|

### After Installation:

- |            |  |
|------------|--|
| PT 77-0007 | Restore drivability and performance after power disconnect |
| PT 77-0011 | PassLock Relearn detailed procedures                       |

CARDONE Technical Service develops ProTech bulletins that are intended to help the installer avoid common installation and service errors. The information presented is derived from our own experience and product knowledge gained from component analysis and research. Following these tips will ensure the best possible performance and service life of the replacement unit.

Please note that these bulletins are provided for your technical information only and are not authorization for repair.

For other ProTech publications, visit [www.cardone.com](http://www.cardone.com)  
CARDONE Industries, Inc. • 5501 Whitaker Ave. • Philadelphia, PA 19124-1799