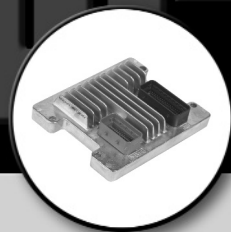


CARDONE ProTech

Supporting Today's Professional Technician



Ford ECC-V Calibration Codes Explained

Application:

Ford EEC-V Programmable Powertrain Control Module (PCM) for model years 1994 and above. Note: These applications use flash technology to update calibration numbers.

Problem:

Duplicate OEM numbers with different calibration numbers for the same Ford application. How do I order the right ECM?

Cause:

Manufacturer production changes made to meet specific emission requirements created two or more different calibration numbers per application. These changes are identified by the vehicle Calibration Number, Tear Tag, or VIN Label.

Solution:

Use CARDONE's Electronics catalog application section (see sample below) to identify the right Ford unit with the correct emission calibration. The following additional information is required:

- Vehicle application: Year, Model and Engine size.
- Emission Calibration Number
(Thru 1998 Emission Calibration label, see sample 1)
(After 1998 VIN Label, see sample 2)
- Tear Tag number (if applicable, see sample 3)
- TSB's (if applicable)

YEAR	APPLICATION	PART NO.	
FORD			
183 (3.0L) Engine			
1997	Taurus		
	w/calibration 7-10B, Tear Tag NXZ1/NXZ2/TTLO	78-8114	
	Tear Tag NXZ1/TTLO/1/2/3 TSB 97-9-4	78-8115	
		TSB 97-12-4	78-8115
1996	Taurus w/Calibration 6-10A.....	78-6292	
	w/Calibration 6-10B	78-6312	

For other ProTech publications, visit www.cardone.com
 CARDONE Industries, Inc. • 5501 Whitaker Ave. • Philadelphia, PA 19124-1799