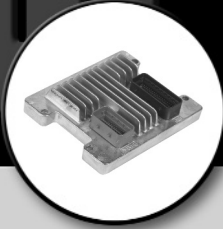


# CARDONE ProTech

Supporting Today's Professional Technician



## 2005 Dodge 5.7L Ram Trucks with DTC P0420 or P0430

**Application:**

Dodge Ram R1500, R2500 and R3500 with 5.7L engine (sales code EZA) built on or before June 1, 2005 (MDH 0601XX).

**Problem:**

DTC P0420 or P0430 Catalyst Efficiency stored code.

**Cause:**

Possible O<sup>2</sup> sensor failure.

**Solution:**

According to Chrysler service bulletin 18-028-05 Rev. A, the downstream O<sup>2</sup> sensor should be replaced with an updated sensor and the Powertrain Control Module (PCM) flashed to the latest calibration. The suggested part number for R1500 trucks is 56029049AA. The suggested part number for R2500/3500 trucks is 56029050AA. Use the CARDONE All-Makes Flash<sup>2</sup> Reprogrammer and a current Chrysler Tech Authority subscription to update the PCM to accommodate the new sensor.

**Note:**

Refer to the vehicle service manual for the latest information and specific repair and diagnostic procedures. This ProTech bulletin is supplied as technical information only and is not an authorization for repair.

For other ProTech publications, visit [www.cardone.com](http://www.cardone.com)  
CARDONE Industries, Inc. • 5501 Whitaker Ave. • Philadelphia, PA 19124-1799