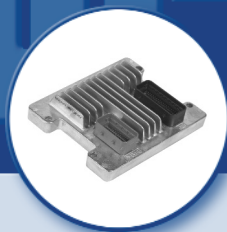


CARDONE ProTech

Supporting Today's Professional Technician



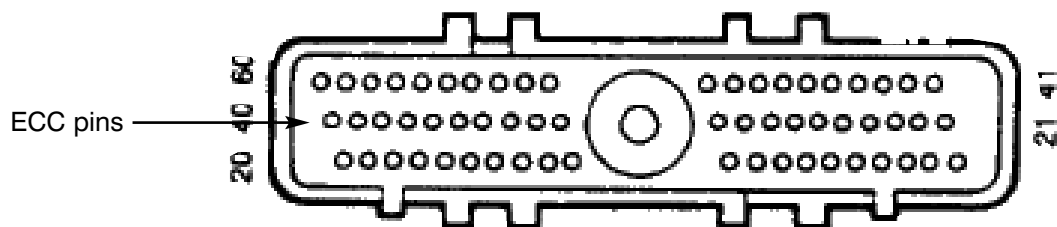
Different Number of ECC Pins — Problem or Not?

Application: Engine Control Computers.

Problem: The number of connector pins on the original ECC and the CARDONE replacement unit do not match.

Cause: The Original Equipment Manufacturer used different number of pins for the same part number. Some pins are fake or not used in every application.

Solution: Don't waste time wrestling with the problem. Always match the original computer service number to the CARDONE part number in the back of the catalog. If correct, the replacement unit will fit and function for the listed application.



Typical ECC connector

Note: When matching the original FORD ECC part number, see the application footnote in the cross reference guide.

For other ProTech publications, visit www.cardone.com
CARDONE Industries, Inc. • 5501 Whitaker Ave. • Philadelphia, PA 19124-1799